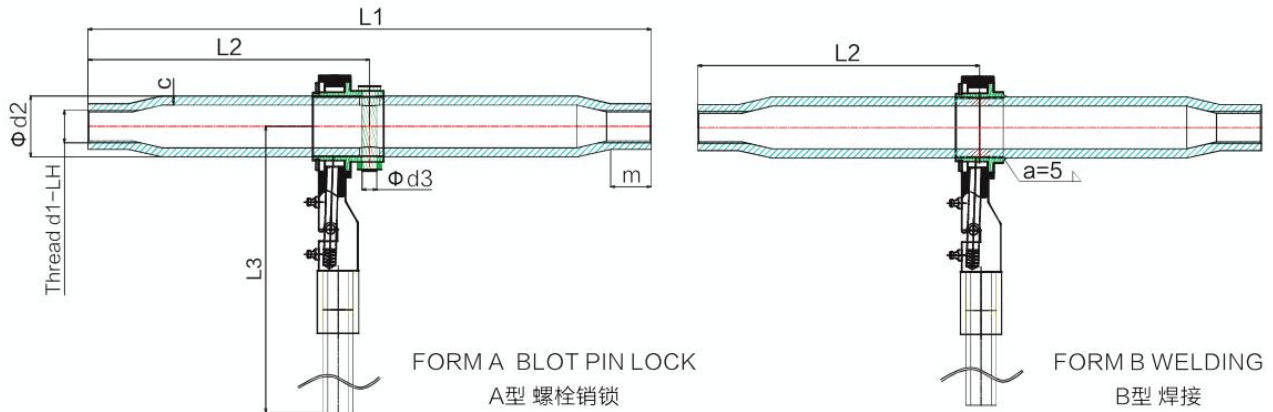


## Tractor ratcheting turnbuckle



Part No.	Thread d1	d2	d3	C	L1	L2	L3	M
1600001	M24x3	42	12	5.6	255	127.5	350	35
1600002	M24x3	42	12	5.6	320	160	350	35
1600003	M27x3	42	14	5.6	435	217.5	350	40
1600004	M27x3	42	14	5.6	500	250	350	40
1600005	M30x3.5	51	16	6.3	450	225	400	45
1600006	M30x3.5	51	16	6.3	1350	675	400	45
1600007	M36x3	63	16	8	700	350	450	50
1600008	M36x4	63	16	8	1600	800	450	50

Swintool tractor ratcheting turnbuckle is not mini and small design, top link sizes is customized as per tractor manufacturing required. Turnbuckle is main function parts in three point hitch of tractor for quick and easy installation adjustments.

China ratcheting turnbuckle for tractor three point hitch, material is alloy steel, electroplating white zinc or yellow zinc, US price is from 1 to 100 USD.

Compactor tractor industries ratchet binder repair kits, covered adjustable from 20 to 60 inch, stabilizer chain turnbuckle, heavy duty ratchet jack, top link Acme threads, clevis pins etc.